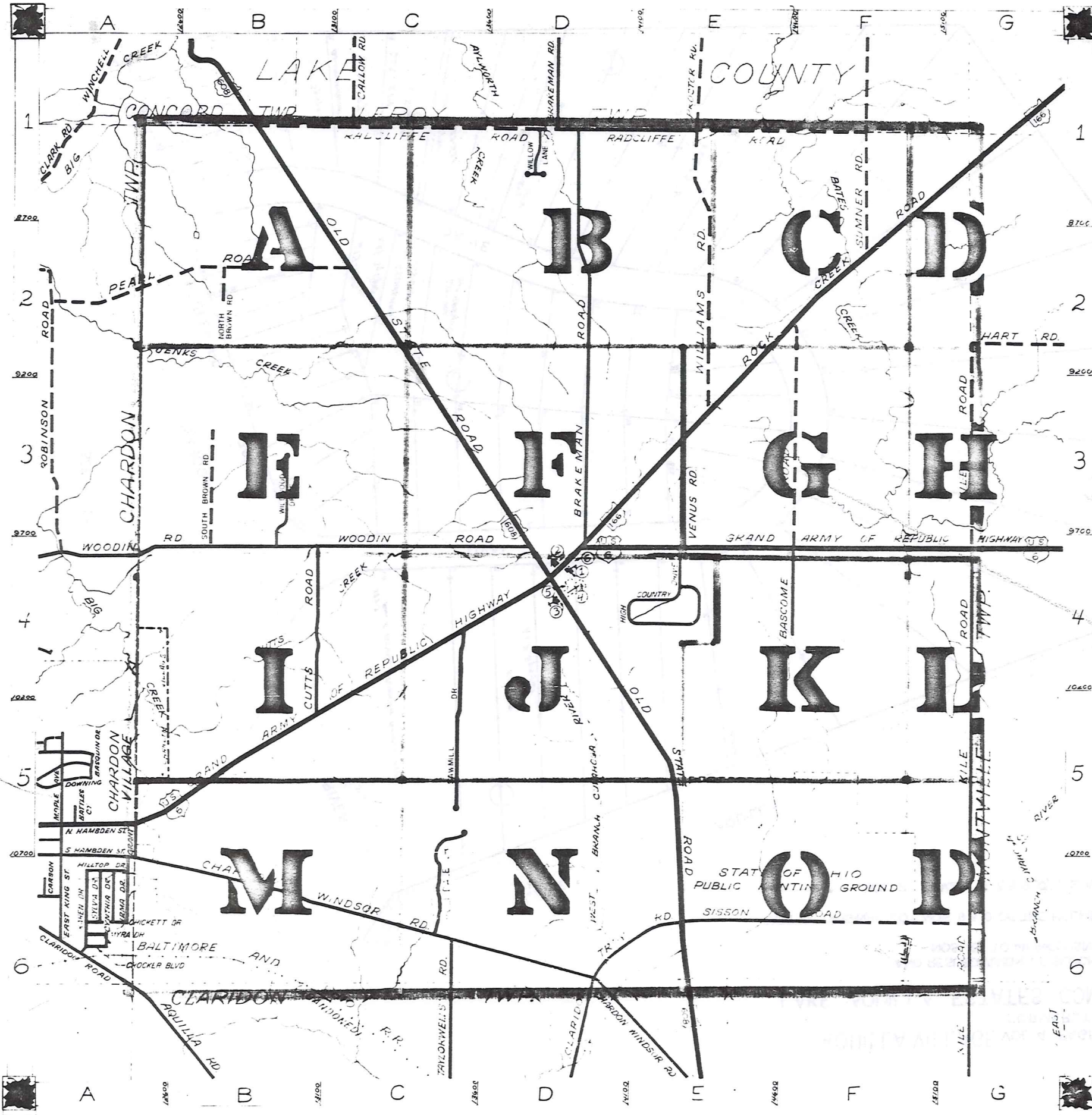


# ROAD INDEX 222



1	A	RADCLIFFE RD	B1-F1
1	B	BASCOME RD. F2-F4 BRAKEMAN RD. D1-D4	
2	C	CHARDON WINDSOR RD. A6-D6 CLARIDON TRCY RD. D6-E6 CUTTS RD. B4-B5	
3	D		
4	F		
5	H	HIGH COUNTRY DR. E4 HOLI-CALE DR. C6	
6			

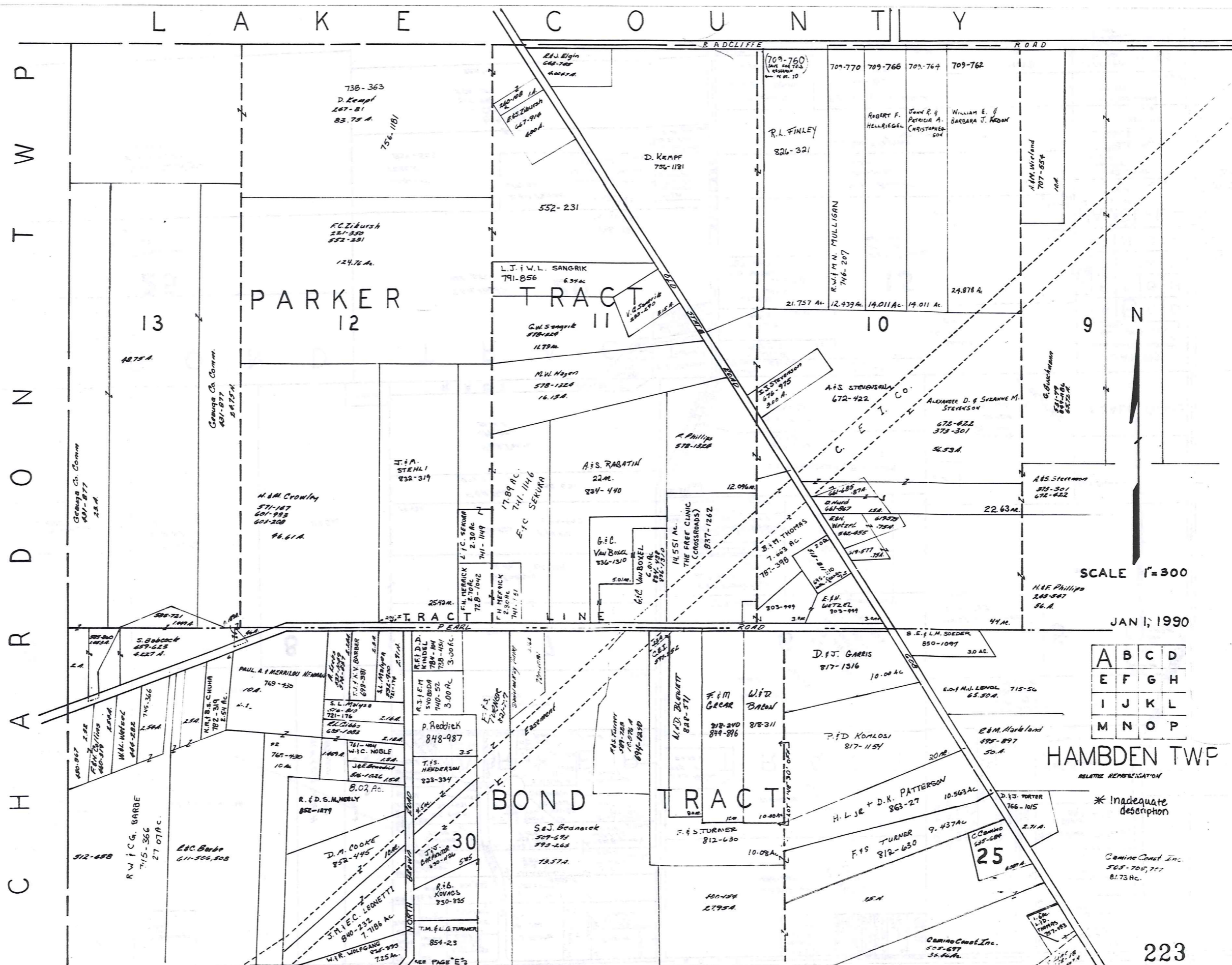
S	SAWMILL DR. C4-C5 SISSON RD. E6-G6 SOUTH BROWN RD. B2-B3 SUMNER RD. F1-F2
T	TAYLORWELLS RD. C6
V	VENUS RD. E3-E4
W	WILLIAMS RD. E1-E3 WOODIN RD. A4-D4 WILDWOOD DR. B3 WILLOW LANE. D1

**HAMBDEN TOWNSHIP**

SCALE: 1"=2000'

ROBERT L. SHAW, COUNTY ENGINEER

- - - UNPAVED ROAD  
 = = = PAVED ROAD  
 - - - COUNTY LINE  
 - - - TOWNSHIP LINE  
 - - - CORPORATION LINE



C H A R D O N T W P  
 C H A R D O N T W P

L A K E C O U N T Y

PARKER TRACT II

BOND TRACT

A	B	C	D
E	F	G	H
I	J	K	L
M	N	O	P

HAMB DEN TWP

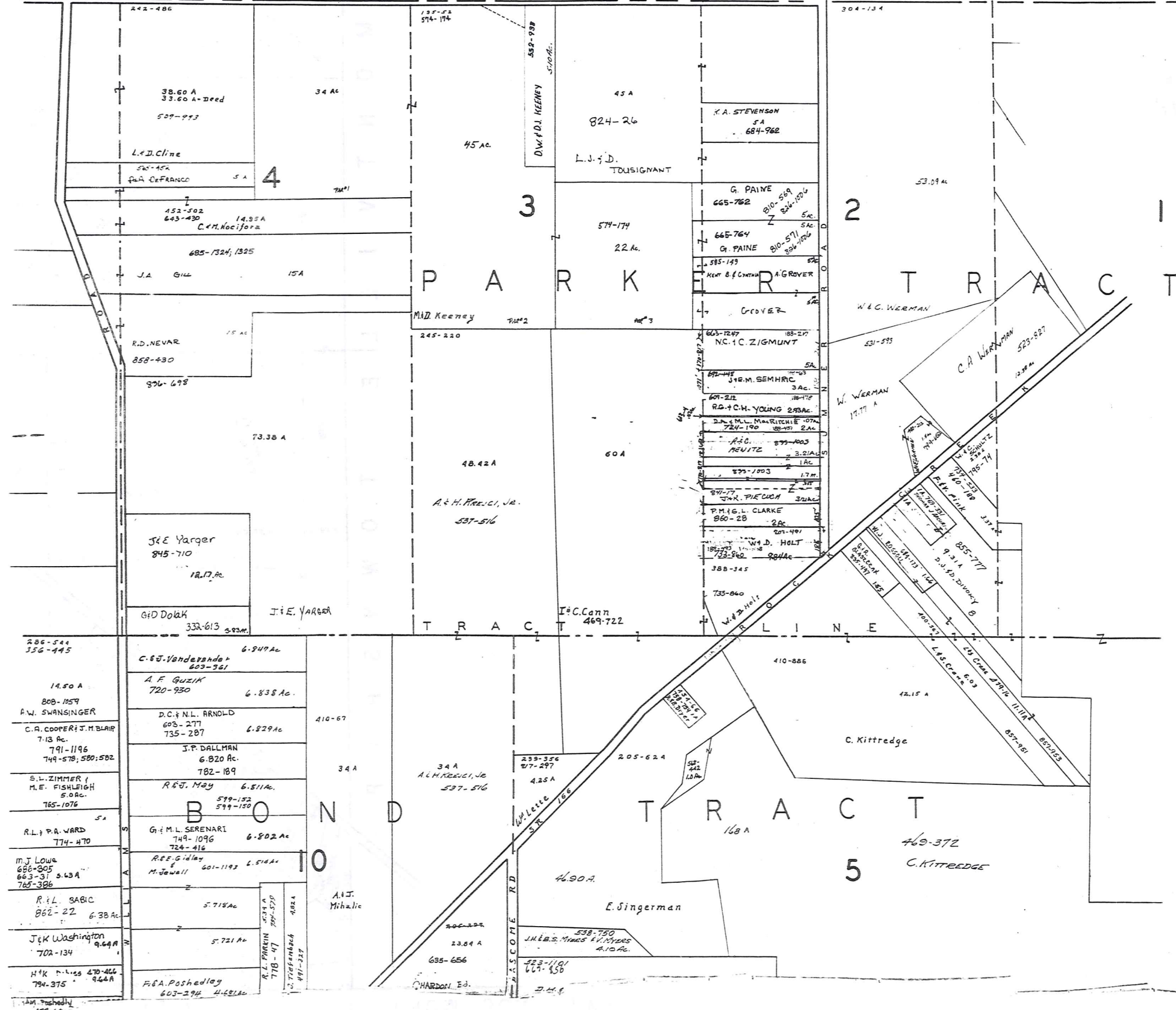
RELATIVE REPRESENTATION

\* Inadequate description

Camino Coast Inc.  
505-697  
81.73 AC.



L A K E C O U N T Y

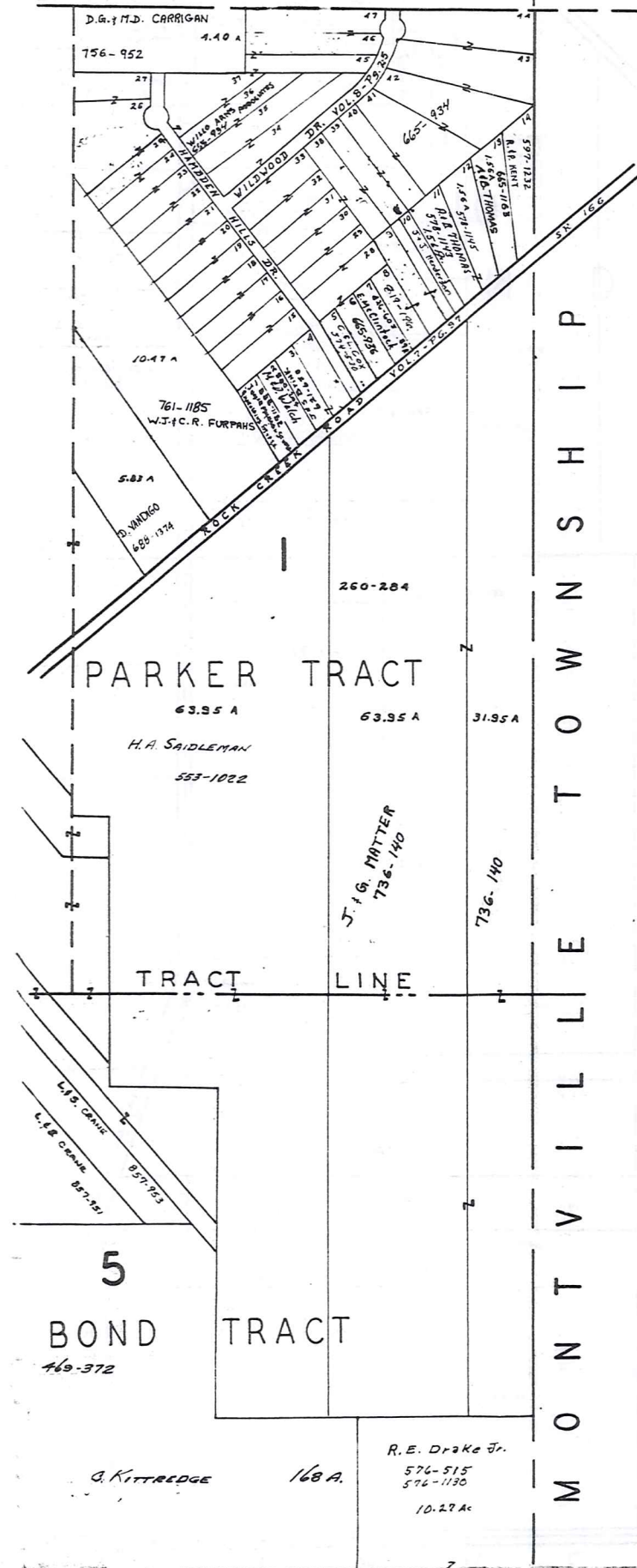


SCALE 1" = 300'  
JAN. 1, 1990

A	B	C	D
E	F	G	H
I	J	K	L
M	N	O	P

HAMB DEN TWF.  
RELATIVE REPRESENTATION

\* Inadequate description



SCALE 1" = 300'  
 JAN. 1, 1990.

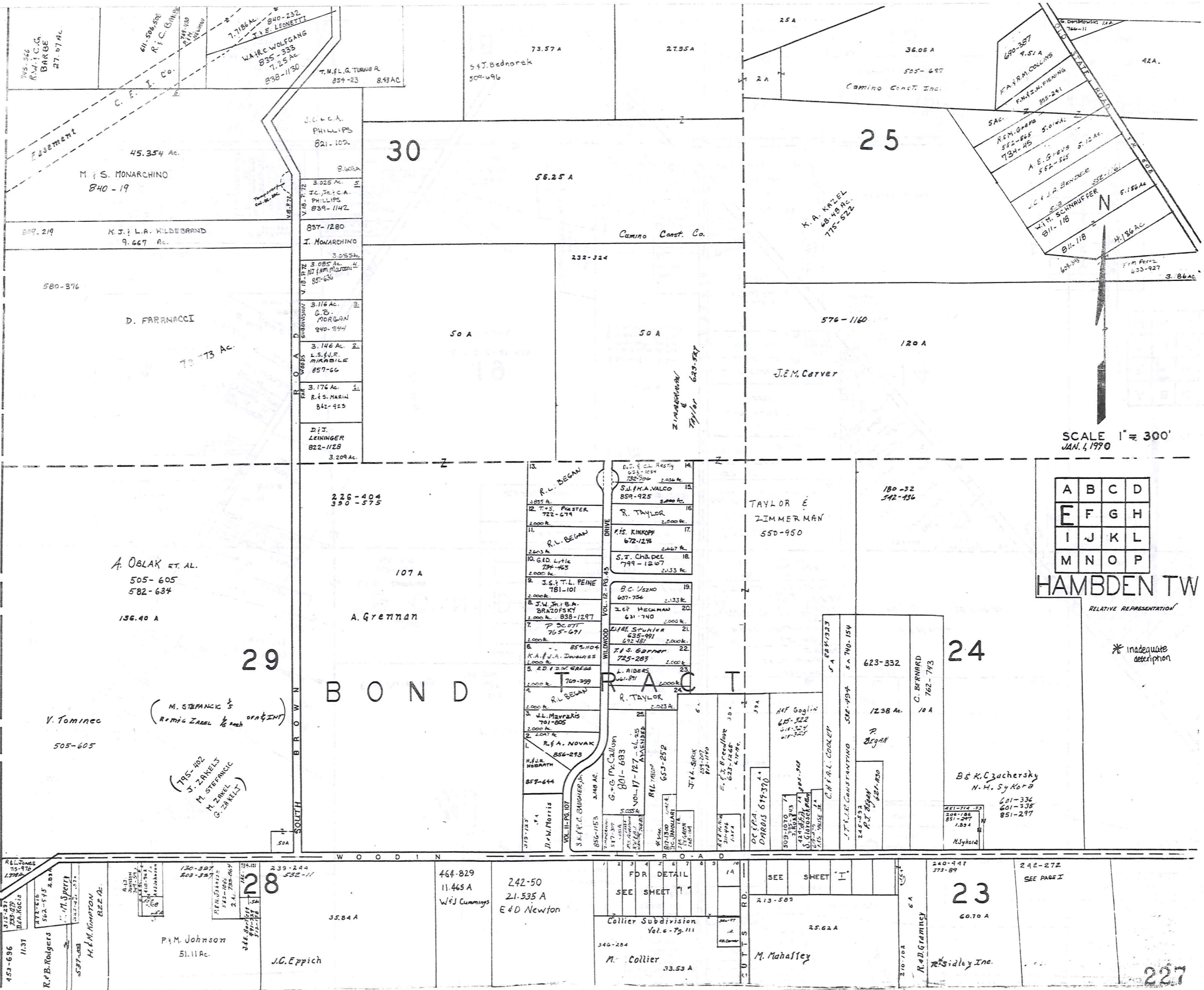
A	B	C	D
E	F	G	H
I	J	K	L
M	N	O	P

HAMB DEN TWP.

RELATIVE REPRESENTATION

\* Inadequate description

C H A R D O N T O W N S H I P



SCALE 1" = 300'  
JAN. 4, 1970

A	B	C	D
E	F	G	H
I	J	K	L
M	N	O	P

HAMB DEN TW

RELATIVE REPRESENTATION

\* inadequate description

F. E. Covert

453-696  
R. B. Rodgers  
H. M. Hampton  
B. E. A.

P. M. Johnson  
51.11 Ac.  
J. C. Eppich

35.84 A  
J. C. Eppich

464-829  
11.465 A  
W. J. Cummings

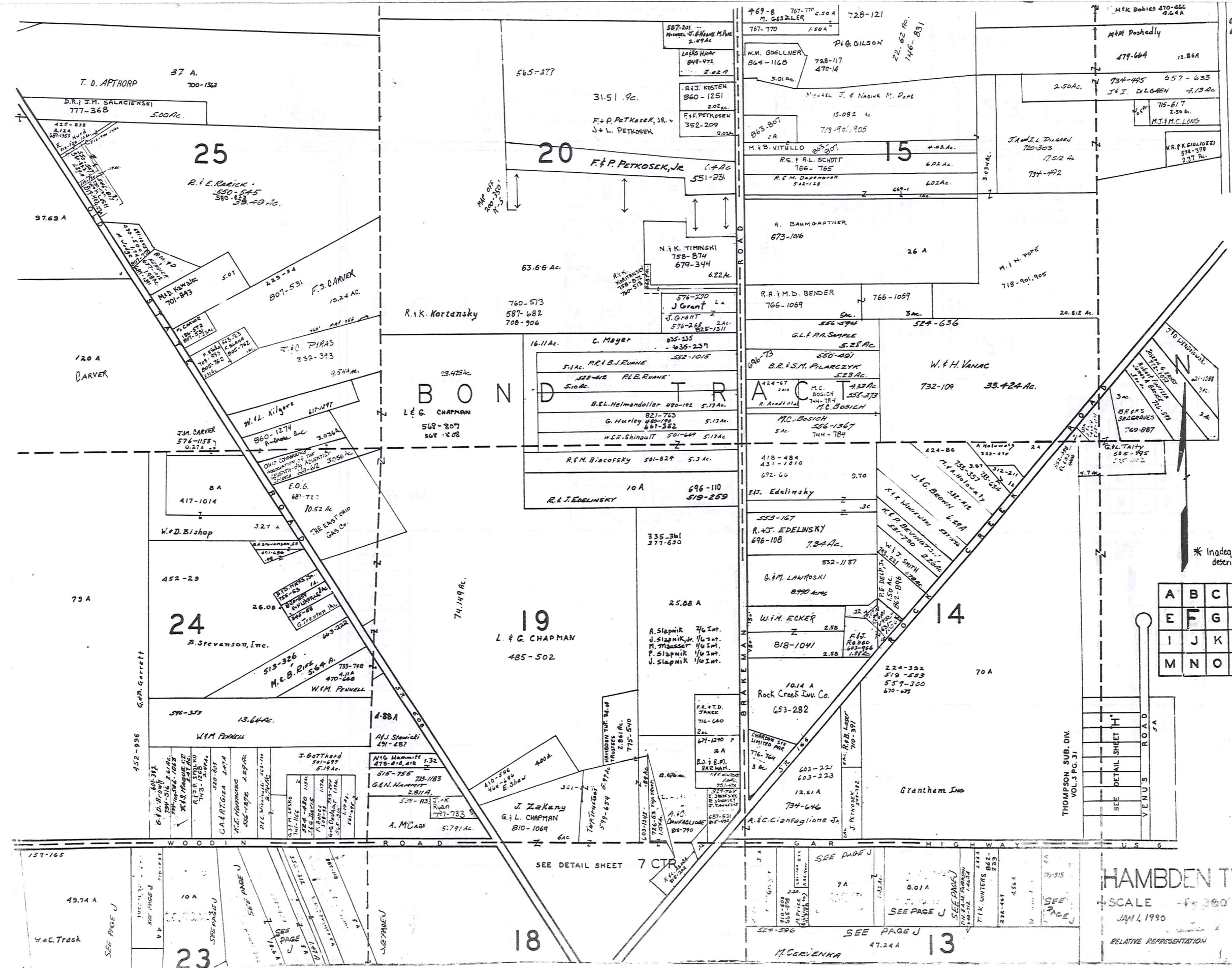
242-50  
21.535 A  
E. D. Newton

33.53 A  
M. Collier

23.62 A  
M. Mahaffey

60.70 A  
R. S. Ridley Inc.

240-447  
373-89  
242-272  
SEE PAGE I



\* Inadequate description

A	B	C	D
E	F	G	H
I	J	K	L
M	N	O	P

HAMB DEN TWP

SCALE - 1" = 300'

JAN 4, 1990

RELATIVE REPRESENTATION

SEE DETAIL SHEET 7 CTR

SEE PAGE J

SEE PAGE J

SEE PAGE J

SEE PAGE J

SEE PAGE U

SEE PAGE U

SEE PAGE U

SEE PAGE U

SEE PAGE U

SEE PAGE U

SEE PAGE U

SEE PAGE U

SEE PAGE U

SEE PAGE U

SEE PAGE U

SEE PAGE U

SEE PAGE U

SEE PAGE U

SEE PAGE U

SEE PAGE U

SEE PAGE U

SEE PAGE U

SEE PAGE U

SEE PAGE U

SEE PAGE U

SEE PAGE U

SEE PAGE U

SEE PAGE U

SEE PAGE U

SEE PAGE U

SEE PAGE U

SEE PAGE U

SEE PAGE U

SEE PAGE U

SEE PAGE U

SEE PAGE U

SEE PAGE U

SEE PAGE U

SEE PAGE U

SEE PAGE U

SEE PAGE U

SEE PAGE U

SEE PAGE U

SEE PAGE U

SEE PAGE U

SEE PAGE U

SEE PAGE U

SEE PAGE U

SEE PAGE U

SEE PAGE U

SEE PAGE U

SEE PAGE U

SEE PAGE U

SEE PAGE U

SEE PAGE U

SEE PAGE U

SEE PAGE U

SEE PAGE U

SEE PAGE U

SEE PAGE U

SEE PAGE U

SEE PAGE U

SEE PAGE U

SEE PAGE U

SEE PAGE U

SEE PAGE U

SEE PAGE U

SEE PAGE U

SEE PAGE U

SEE PAGE U

SEE PAGE U

SEE PAGE U

SEE PAGE U

SEE PAGE U

SEE PAGE U

SEE PAGE U

SEE PAGE U

SEE PAGE U

SEE PAGE U

SEE PAGE U

SEE PAGE U

SEE PAGE U

SEE PAGE U

SEE PAGE U

SEE PAGE U

SEE PAGE U

SEE PAGE U

SEE PAGE U

SEE PAGE U

SEE PAGE U

SEE PAGE U

SEE PAGE U

SEE PAGE U

SEE PAGE U

SEE PAGE U

SEE PAGE U

SEE PAGE U

SEE PAGE U

SEE PAGE U

SEE PAGE U

SEE PAGE U

SEE PAGE U

SEE PAGE U

SEE PAGE U

SEE PAGE U

SEE PAGE U

SEE PAGE U

SEE PAGE U

SEE PAGE U

SEE PAGE U

SEE PAGE U

SEE PAGE U

SEE PAGE U

SEE PAGE U

SEE PAGE U

SEE PAGE U

SEE PAGE U

SEE PAGE U

SEE PAGE U

SEE PAGE U

SEE PAGE U

SEE PAGE U

SEE PAGE U

SEE PAGE U

SEE PAGE U

SEE PAGE U

SEE PAGE U

SEE PAGE U

SEE PAGE U

SEE PAGE U

SEE PAGE U

SEE PAGE U

SEE PAGE U

SEE PAGE U

SEE PAGE U

SEE PAGE U

SEE PAGE U

SEE PAGE U

SEE PAGE U

SEE PAGE U

SEE PAGE U

SEE PAGE U

SEE PAGE U

SEE PAGE U

SEE PAGE U

SEE PAGE U

SEE PAGE U

SEE PAGE U

SEE PAGE U

SEE PAGE U

SEE PAGE U

SEE PAGE U

SEE PAGE U

SEE PAGE U

SEE PAGE U

SEE PAGE U

SEE PAGE U

SEE PAGE U

SEE PAGE U

SEE PAGE U

SEE PAGE U

SEE PAGE U

SEE PAGE U

SEE PAGE U

SEE PAGE U

SEE PAGE U

SEE PAGE U

SEE PAGE U

SEE PAGE U

SEE PAGE U

SEE PAGE U

SEE PAGE U

SEE PAGE U

SEE PAGE U

SEE PAGE U

SEE PAGE U

SEE PAGE U

SEE PAGE U

SEE PAGE U

SEE PAGE U

SEE PAGE U

SEE PAGE U

SEE PAGE U

SEE PAGE U

SEE PAGE U

SEE PAGE U

SEE PAGE U

SEE PAGE U

SEE PAGE U

SEE PAGE U

SEE PAGE U

SEE PAGE U

SEE PAGE U

SEE PAGE U

SEE PAGE U

SEE PAGE U

SEE PAGE U

SEE PAGE U

SEE PAGE U

SEE PAGE U

SEE PAGE U

SEE PAGE U

SEE PAGE U

SEE PAGE U

SEE PAGE U

SEE PAGE U

SEE PAGE U

SEE PAGE U

SEE PAGE U

SEE PAGE U

SEE PAGE U

SEE PAGE U

SEE PAGE U

SEE PAGE U

SEE PAGE U

SEE PAGE U

SEE PAGE U

SEE PAGE U

SEE PAGE U

SEE PAGE U

SEE PAGE U

SEE PAGE U

SEE PAGE U

SEE PAGE U

SEE PAGE U

SEE PAGE U

SEE PAGE U

SEE PAGE U

SEE PAGE U

SEE PAGE U

SEE PAGE U

SEE PAGE U

SEE PAGE U

SEE PAGE U

SEE PAGE U

SEE PAGE U

SEE PAGE U

SEE PAGE U

SEE PAGE U

SEE PAGE U

SEE PAGE U

SEE PAGE U

SEE PAGE U

SEE PAGE U

SEE PAGE U

SEE PAGE U

SEE PAGE U

SEE PAGE U

SEE PAGE U

SEE PAGE U

SEE PAGE U

SEE PAGE U

SEE PAGE U

SEE PAGE U

SEE PAGE U

SEE PAGE U

SEE PAGE U

SEE PAGE U

SEE PAGE U

SEE PAGE U

SEE PAGE U

SEE PAGE U

SEE PAGE U

SEE PAGE U

SEE PAGE U

SEE PAGE U

SEE PAGE U

SEE PAGE U

SEE PAGE U

SEE PAGE U

SEE PAGE U

SEE PAGE U

SEE PAGE U

SEE PAGE U

SEE PAGE U

SEE PAGE U

SEE PAGE U

SEE PAGE U

SEE PAGE U

SEE PAGE U

SEE PAGE U

SEE PAGE U

SEE PAGE U

SEE PAGE U

SEE PAGE U

SEE PAGE U

SEE PAGE U

SEE PAGE U

SEE PAGE U

SEE PAGE U

SEE PAGE U

SEE PAGE U

SEE PAGE U

SEE PAGE U

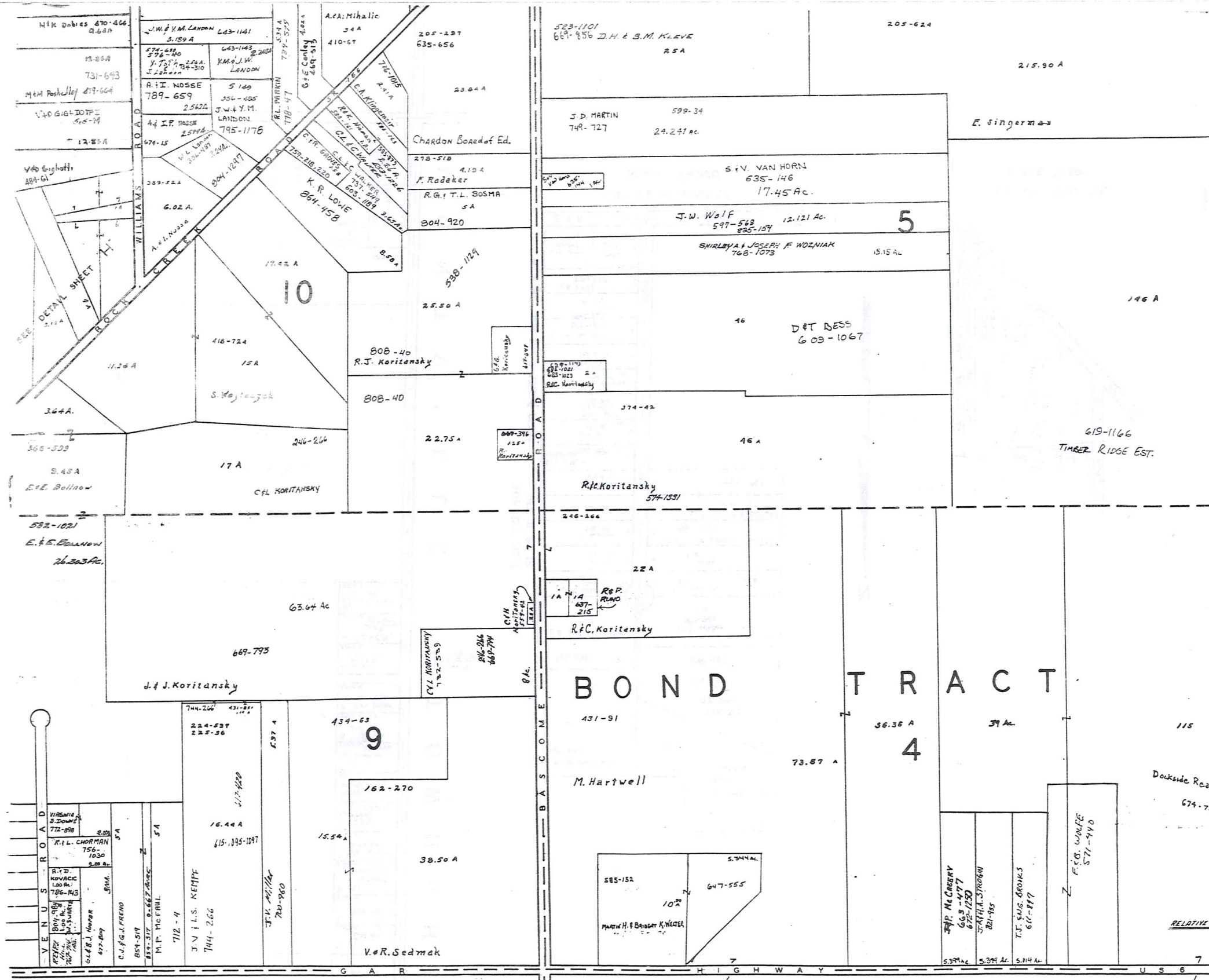
SEE PAGE U

SEE PAGE U

SEE PAGE U

SEE PAGE U

SEE PAGE U



SCALE 1" = 300'

A	B	C	D
E	F	G	H
I	J	K	L
M	N	O	P

HAMB DEN TWP.

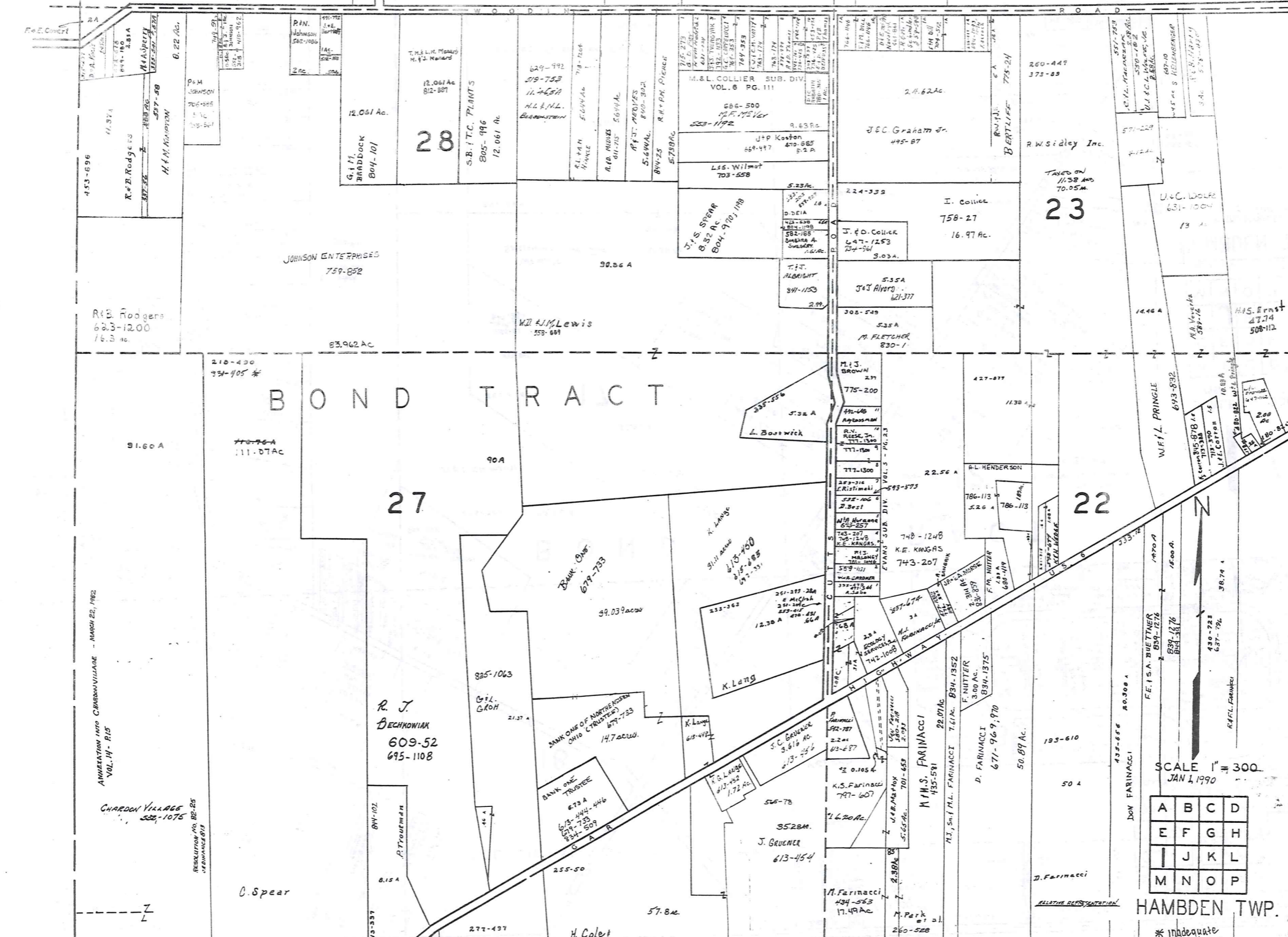
JAN. 1, 1990

RELATIVE REPRESENTATION

\* Inadequate description

SEE PAGE "K"





453-696  
R.E.B. Rodgers  
633-1200  
16.0 ac.

12.061 Ac.  
BRADDOCK  
Box 101

12.061 Ac.  
S.B. T.C. PLANTS  
805-196  
12.061 Ac.

629-992  
719-753  
11.465A  
H.L. & N.L.  
BROOKSTEIN

666-500  
M.F. MEYER  
523-192

2.462 Ac.  
J.E.C. Graham Jr.  
495-87

260-449  
375-89

23  
TAKES ON  
11.58 AND  
70.05A

220-449  
375-89  
R.W. Sidley Inc.

JOHNSON ENTERPRISES  
759-852

90.86 A

W.J. Lewis  
558-689

J.S. STEAR  
8.32 Ac  
804-970, 1188

5.23 Ac.  
D. DEIA

224-339  
I. Collier  
758-27  
16.97 Ac.

J. & D. Collier  
647-1253  
24-561 3.03A.

U.C. Wolfe  
631-1004  
13 A

91.60 A

210-430  
334-405 \*

90A

W.J. Lewis  
558-689

L. Bootwick

M.J. BROWN  
775-200

427-877

W.F.L. PRINGLE  
693-832

693-832  
10.88A  
J.F. Carter

27

90A

Bank One  
679-733

31.11 ac  
613-460  
613-185  
613-331

777-1300

22.56 A  
R.L. HENDERSON

786-113  
5.26 A 786-113

22

AMMERTON INTO CHARDON VILLAGE - MARCH 22, 1982  
VOL. 14 - P. 15  
CHARDON VILLAGE  
530-1075

90A

825-1063  
G.L. GROH  
21.37 A

59.039 ac  
Bank One  
679-733

251-277 28A  
251-306  
251-417 6.4A  
12.38 A 470-811  
6.4A

743-207  
K.E. KANGAS

743-207  
K.E. KANGAS

743-207  
K.E. KANGAS

743-207  
K.E. KANGAS

R. J. BECHNOWIAK  
609-52  
695-1108

14.7 ac  
BANK ONE TRUSTEE  
679-733  
679-733  
834-509

14.7 ac  
BANK ONE TRUSTEE  
679-733  
679-733  
834-509

3.616 Ac  
S.C. BRUNER  
613-256

3.616 Ac  
S.C. BRUNER  
613-256

3.616 Ac  
S.C. BRUNER  
613-256

3.616 Ac  
S.C. BRUNER  
613-256

3.616 Ac  
S.C. BRUNER  
613-256

O. Spear

272-437  
9.18 A

H. Colet  
S. Hirsch

57.8 ac

3528A.  
J. GRUENER  
613-454

17.49 Ac  
M. Farinacci

50.89 Ac.  
D. Farinacci  
671-969, 970

193-610  
50 A

SCALE 1" = 300'  
JAN 1, 1990

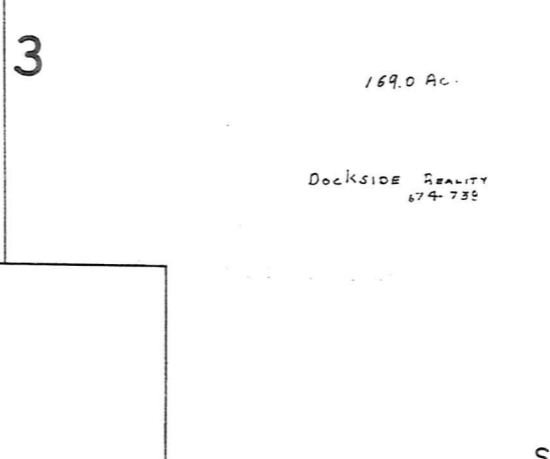
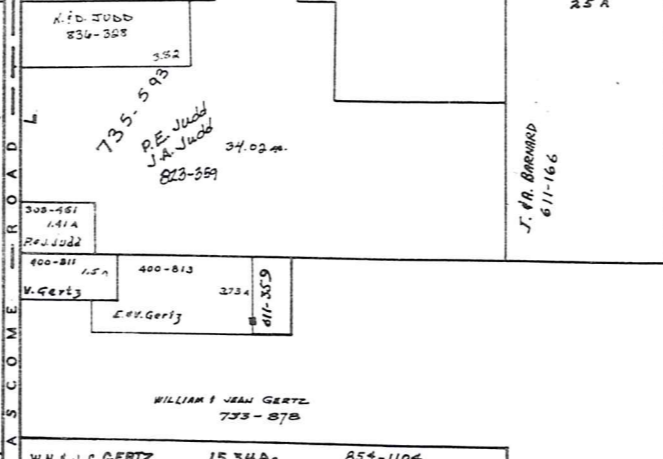
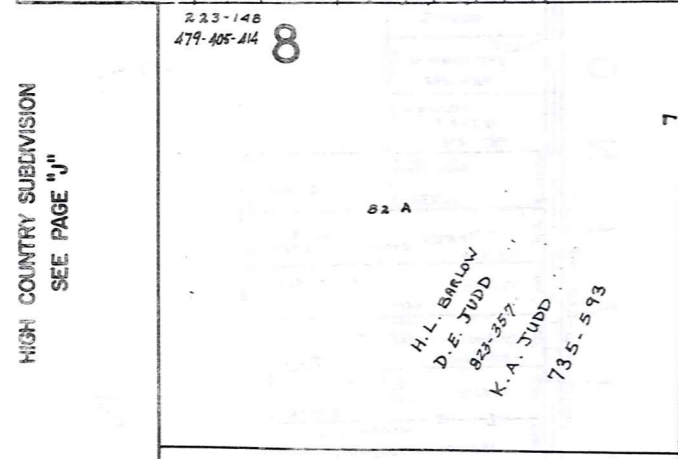
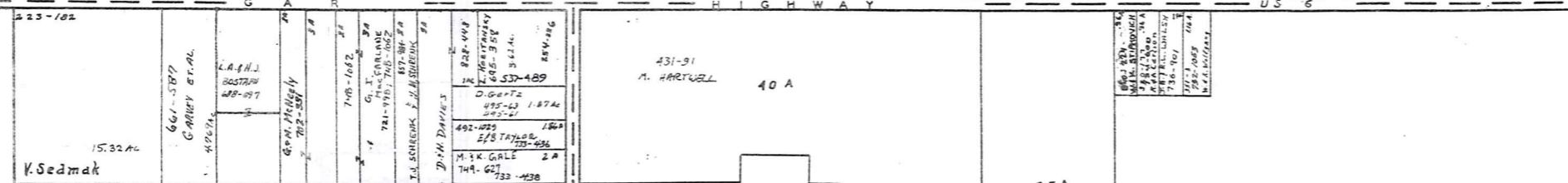
A	B	C	D
E	F	G	H
I	J	K	L
M	N	O	P

HAMB DEN TWP.

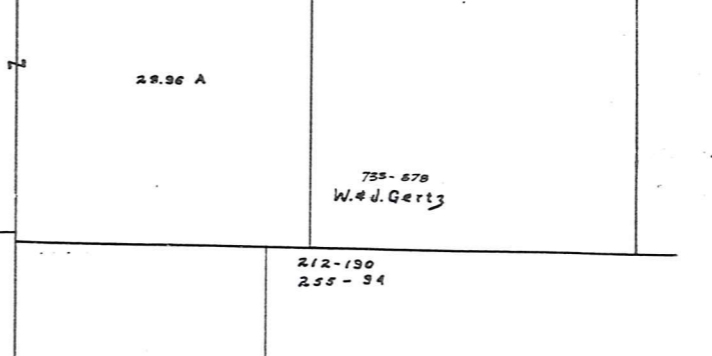
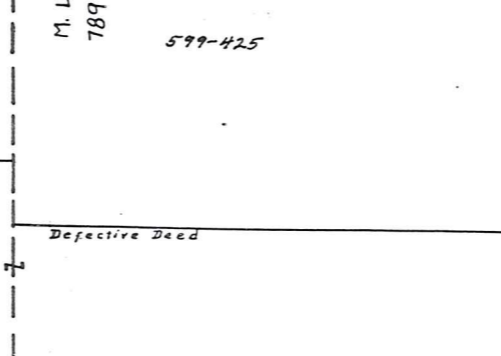
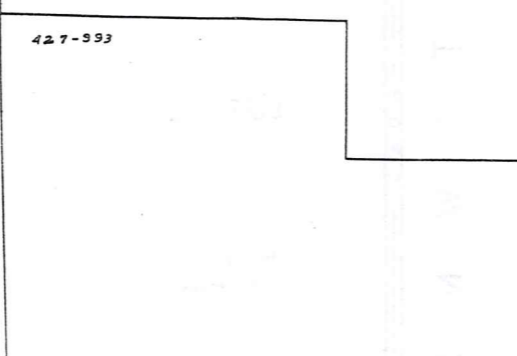
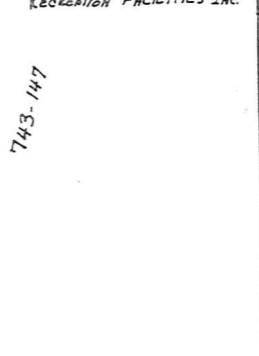
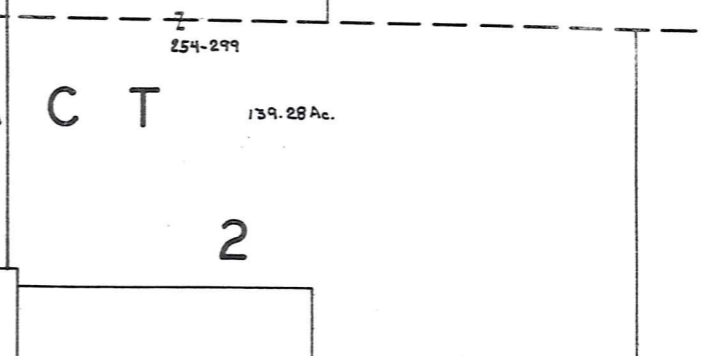
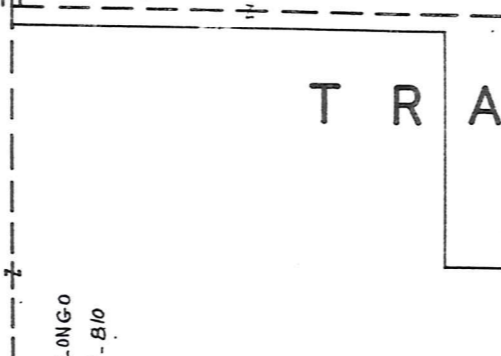
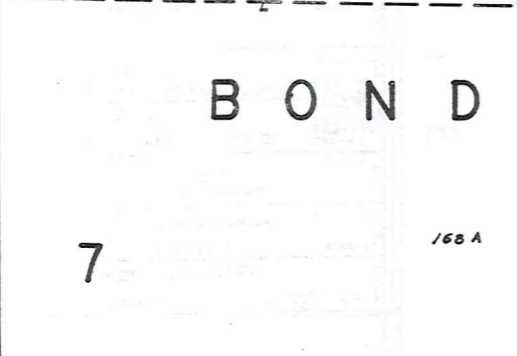
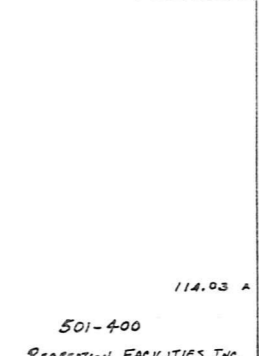
\* inadequate description



HIGH COUNTRY SUBDIVISION  
SEE PAGE "J"



# BOND TRACT



A	B	C	D
E	F	G	H
I	J	K	L
M	N	O	P

\* Inadequate description

HAMB DEN TWP.  
JAN. 1, 1990  
RELATIVE REPRESENTATION

G A R HIGHWAY US 6

3

170.00 A.

Dockside Realty  
674-238

BOND TRACT

R O A D T O W N S H I P M O N T V I L L E

2

1	TE. & KA. MICCO	4.98 AC.
2	R. & B. Grant	4.98 AC.
3	R. & D. Suteric	4.98 AC.
4	R. & E. Crombie II	4.98 AC.
5	G. M. Neal & M. R. Harwell	4.98 AC.
6	R. Kavaras	4.98 AC.
7	H. Tomasin	4.98 AC.
8	DIC SAE ing	4.98 AC.
9	A. M. Burnett	4.98 AC.
10	MARKS & ALICE L. NOCAR	4.98 AC.
11	D. S. J. L. PERRY	5.187 AC.
12	E. P. VARGA	3.027 AC.
	Z. VARGA et al.	3.027 AC.
	K. M. SCHEITZOW	4 AC.

817-625  
817-627

S. Snopel

G. & R. RAY  
609-1051

50 A.

(SEE PAGE K)



SCALE 1" = 300'

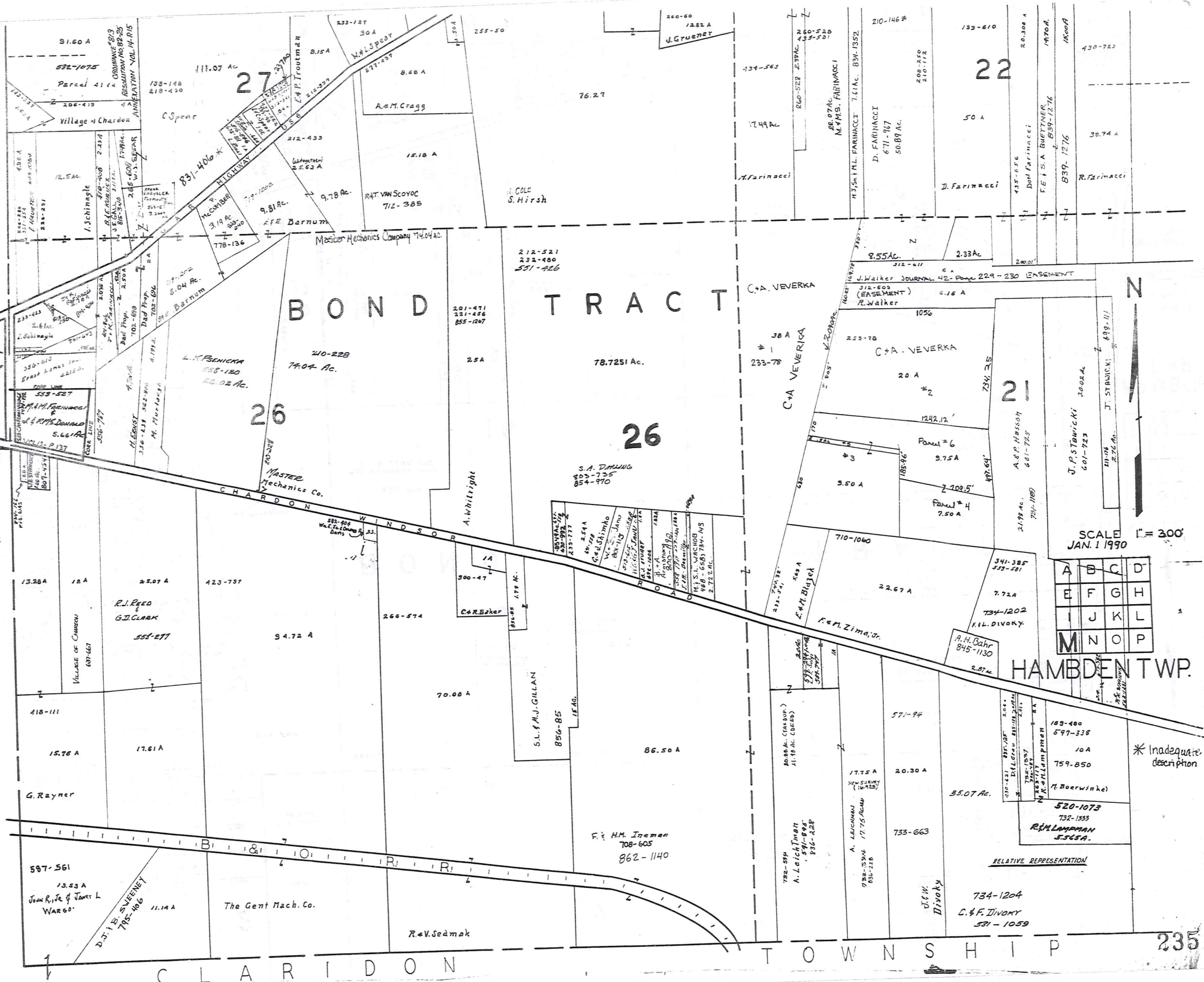
RELATIVE REPRESENTATION

A	B	C	D
E	F	G	H
I	J	K	L
M	N	O	P

HAMB DEN TWP.  
JAN 1 1999

\* Inadequate description

C H A R D O N T O W N S H I P



# BOND TRACT

26

22

21

SCALE 1" = 300'  
JAN. 1 1990

A	B	C	D
E	F	G	H
I	J	K	L
M	N	O	P

HAMBLEN TWP.

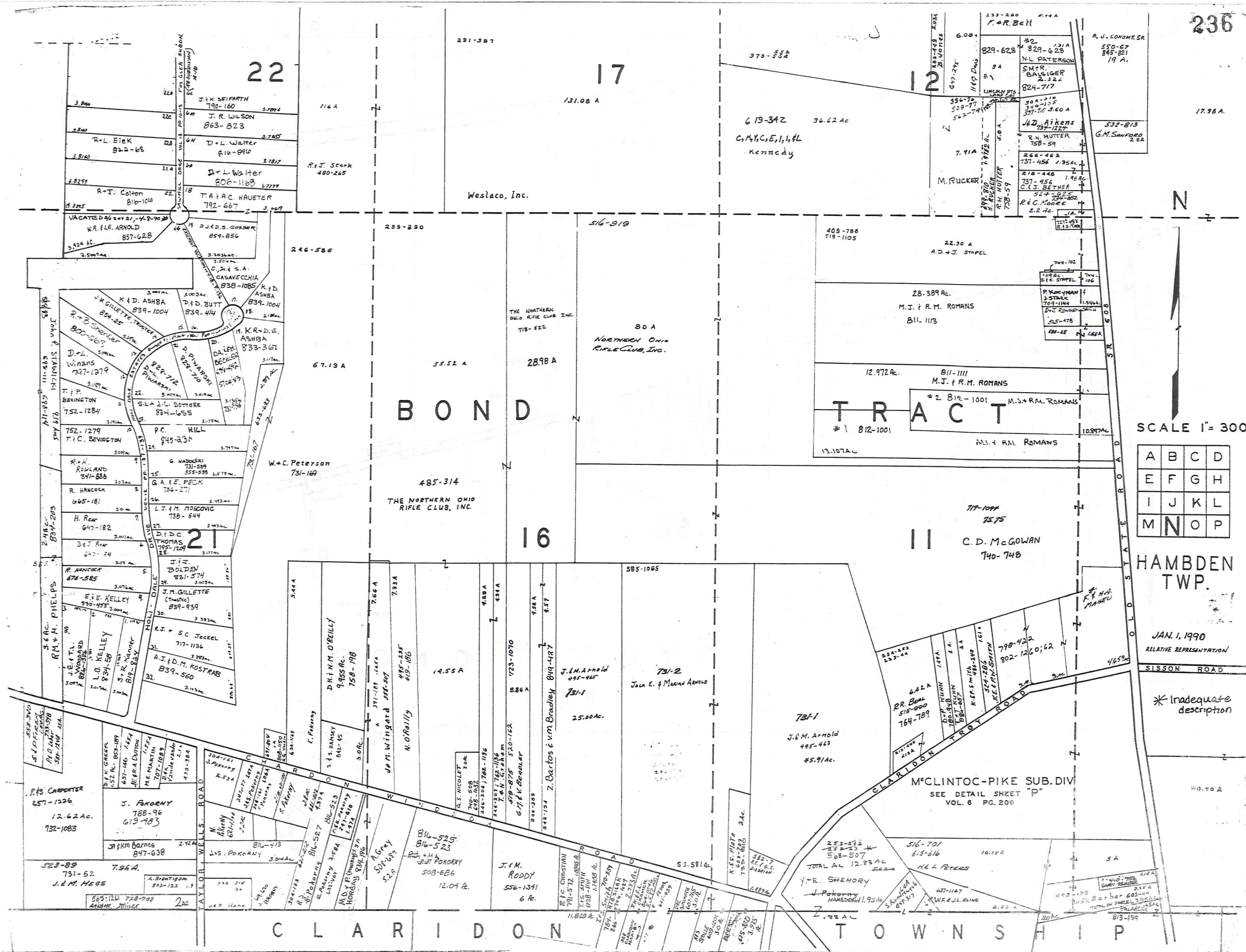
\* Inadequate description

RELATIVE REPRESENTATION

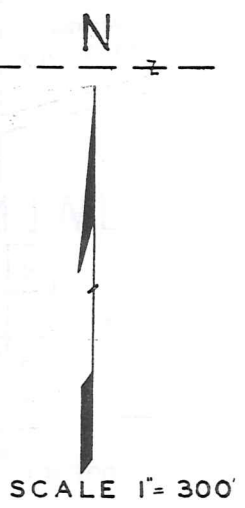
235

T O W N S H I P

C L A R I D O N



236



A	B	C	D
E	F	G	H
I	J	K	L
M	N	O	P

HAMB DEN TWP.  
 JAN. 1, 1990  
 RELATIVE REPRESENTATION  
 \* Inadequate description

CLARIDON TOWNSHIP

356-65-67

94 A

927-993

147.40 A

609-1051

50A

See MAP  
Pg. 5  
K, L & P

G. R. RAY

State of Ohio

17.98 A

7

2

± 100 A

260-274

764-769

P.A. SPISAK

P.A. SPISAK

764-769

31.80 A

P. Spisak

266-581

BOND

562.34 A

TRACT

6

State of Ohio

20 A

SCALE 1" = 300'

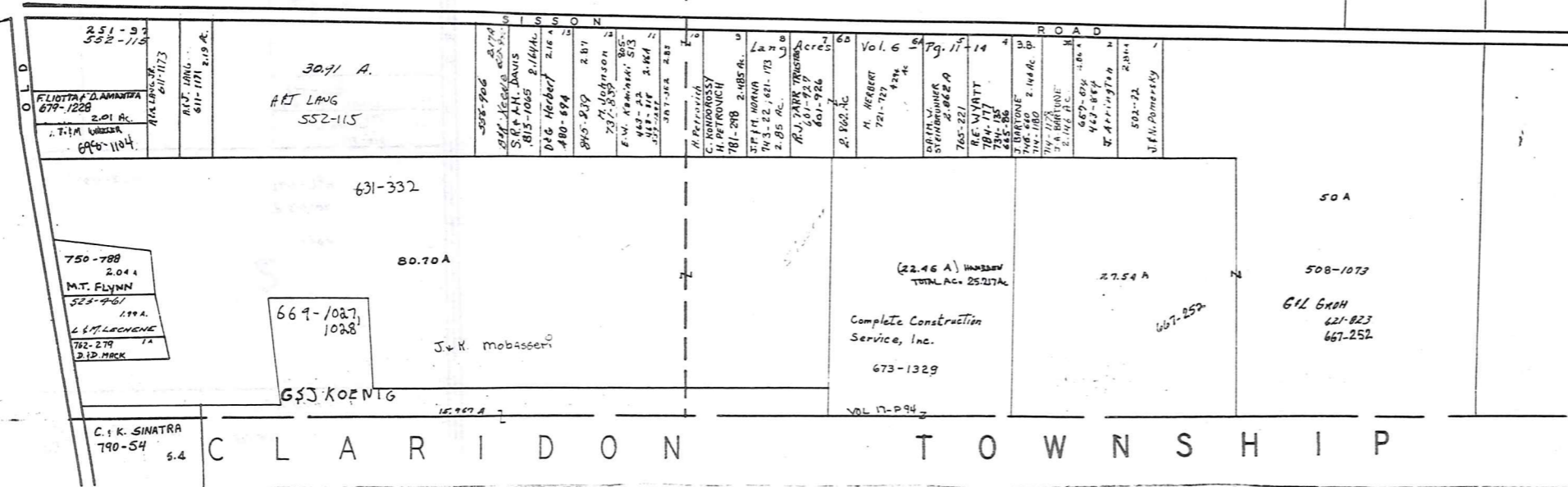
A	B	C	D
E	F	G	H
I	J	K	L
M	N	O	P

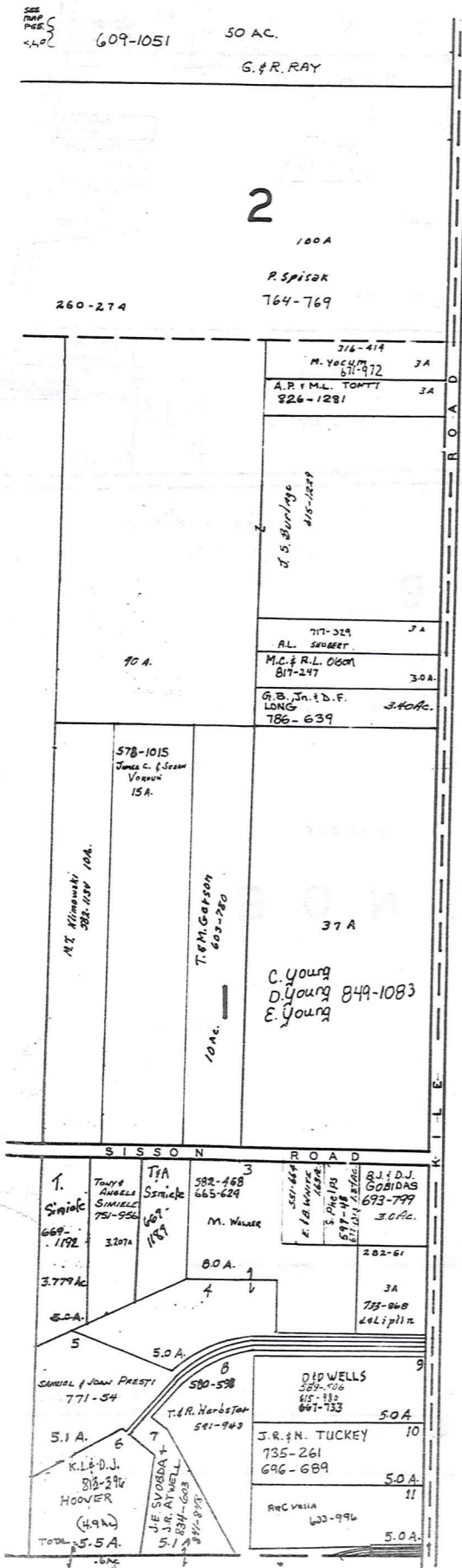
HAMB DEN TWP.

JAN. 1, 1990

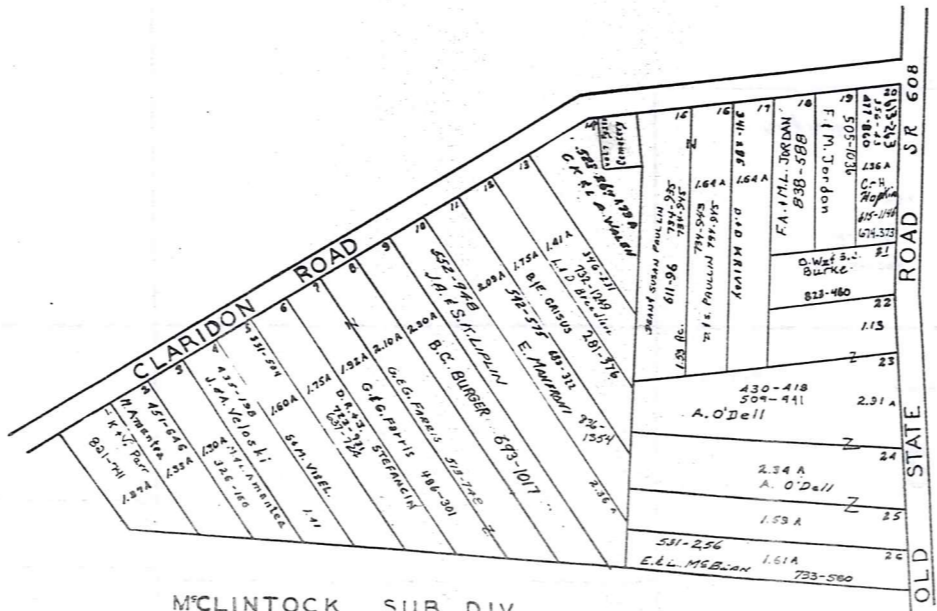
RELATIVE REPRESENTATION

\* Inadequate description





MONTVILLE TOWNSHIP



MCCLEINTOCK SUB. DIV.  
 VOL. 8 PG. 209  
 LOT 6 & 11 BOND TR.  
 Scale 1"=200'



SCALE 1" = 300'  
 JAN. 1, 1990

A	B	C	D
E	F	G	H
I	J	K	L
M	N	O	P

HAMB DEN TWP.

RELATIVE REPRESENTATION

\* Inadequate description



# Explanation and Use Sheet for Geauga County, Ohio

A

SAMPLE (PARTIAL) COUNTY INDEX MAP



Tract Lot Number

Acreage

Township Name

Village Boundary

Street Name

Village Name

Township Boundary

Owners Name

Denotes Continuous Ownership

Deed Book & Page

Map Page Number

Township Name

Village Name

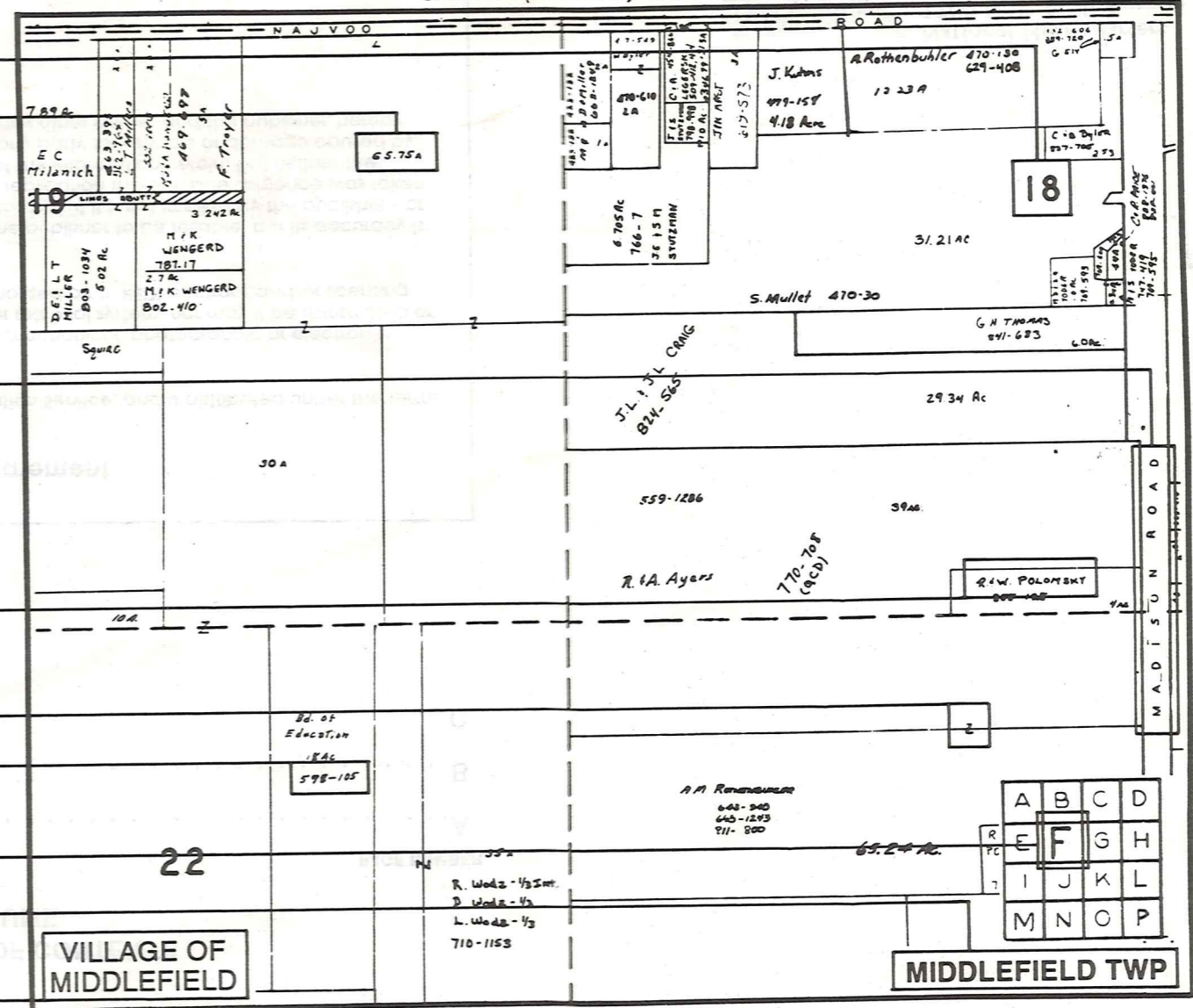
Village Boundary

Street Name

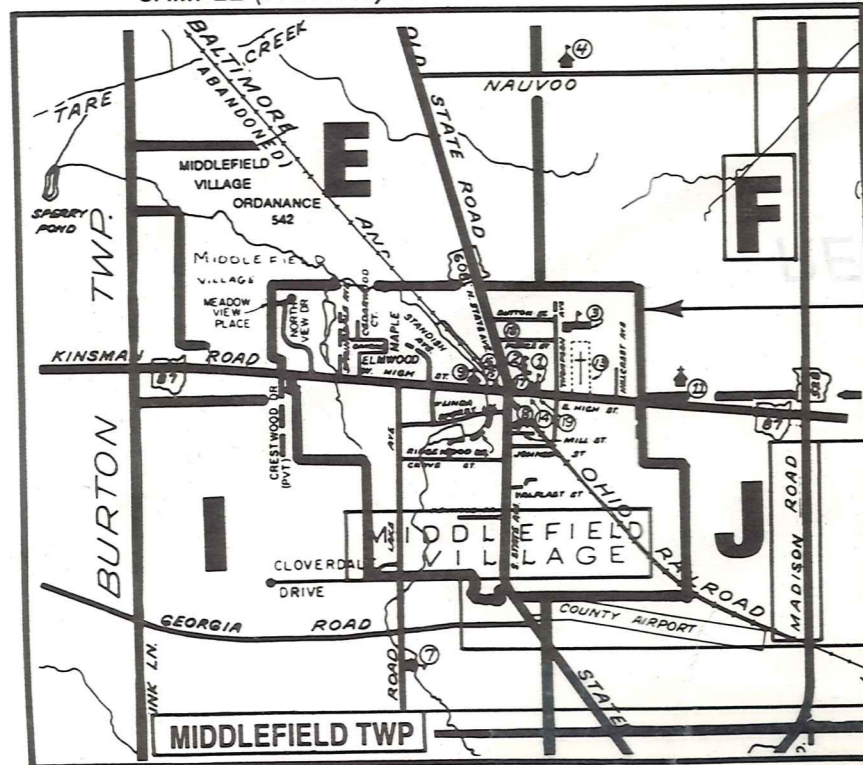
Village Name

Township Name

SAMPLE (PARTIAL) MAP PAGE



SAMPLE (PARTIAL) MUNICIPALITY INDEX MAP



## USE OF THE MAP VOLUME

- LOCATE THE GENERAL AREA OF INTEREST ON THE COUNTY INDEX MAP AND NOTE THE MUNICIPALITY NAME (TOWNSHIP OR VILLAGE).
  - REFER TO THE TABLE OF CONTENTS AND NOTE THE BEGINNING ATLAS PAGE NUMBER FOR THE MUNICIPALITY OF INTEREST.
  - TURN TO THE PAGE INDICATED, ON THIS PAGE WILL APPEAR AN INDEX MAP FOR THAT MUNICIPALITY.
  - LOCATE THE GENERAL AREA OF INTEREST AND NOTE THE MAP PAGE NUMBER. THIS MAY BE EITHER A LETTER OR A NUMBER.
  - MAP PAGES ARE IN ALPHABETICAL (OR NUMERICAL) SEQUENCE FOLLOWING THE MUNICIPALITY INDEX MAP. FOLLOW SEQUENCE TO THE MAP PAGE INDICATED.
  - LOCATE SPECIFIC PARCEL OF INTEREST AND NOTE THE DESIRED INFORMATION.
- NOTE: ON SOME MAPS YOU MAY BE REFERRED TO A DETAIL SHEET SHOWING AN ENLARGEMENT OF THE AREA. THESE MAPS ARE FOUND AT THE END OF THE REGULAR MAP PAGES IN EACH MUNICIPALITY IN EITHER ALPHABETICAL OR NUMERICAL SEQUENCE.
- NOTE: CHARDON VILLAGE HAS TITLE SHEETS. TO LOCATE OWNERS NAME, NOTE THE PARCEL NUMBER, REFER TO THE TITLE PAGE FOLLOWING THE MAP OF INTEREST, FOLLOW NUMERICAL SEQUENCE TO THE PARCEL NUMBER OF INTEREST AND NOTE THE DESIRED INFORMATION. IN ALL OTHER MUNICIPALITIES THE OWNERS NAME APPEARS ON THE MAP PAGE.